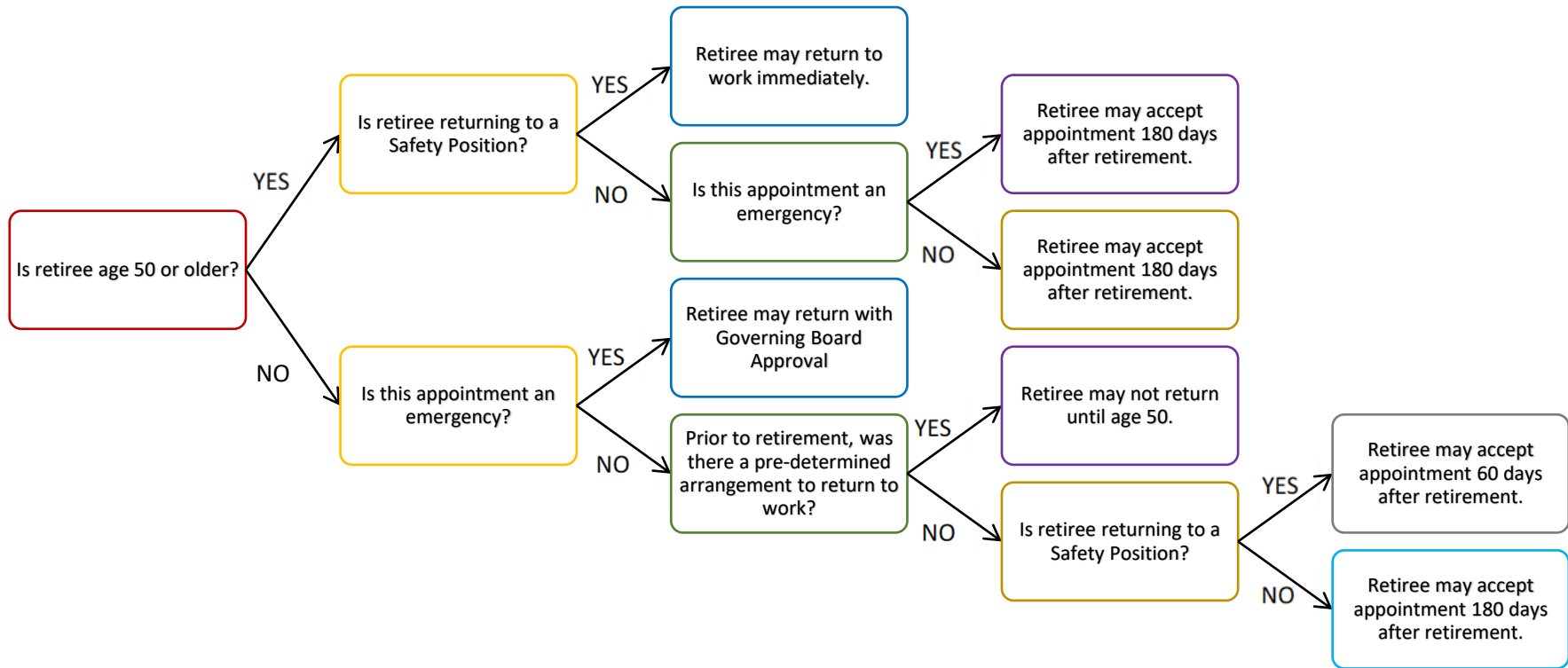


## PEPRA and IRS Decision Tree for Rehiring Safety Members



- A retiree may not return to work, under any circumstance, if he/she has received unemployment insurance in the last 12 months with any StanCERA employer.
- An emergency is defined in Government Code §7522.56 as (1) an event that would stop public business or (2) the appointment necessary to fill a critically needed position.